

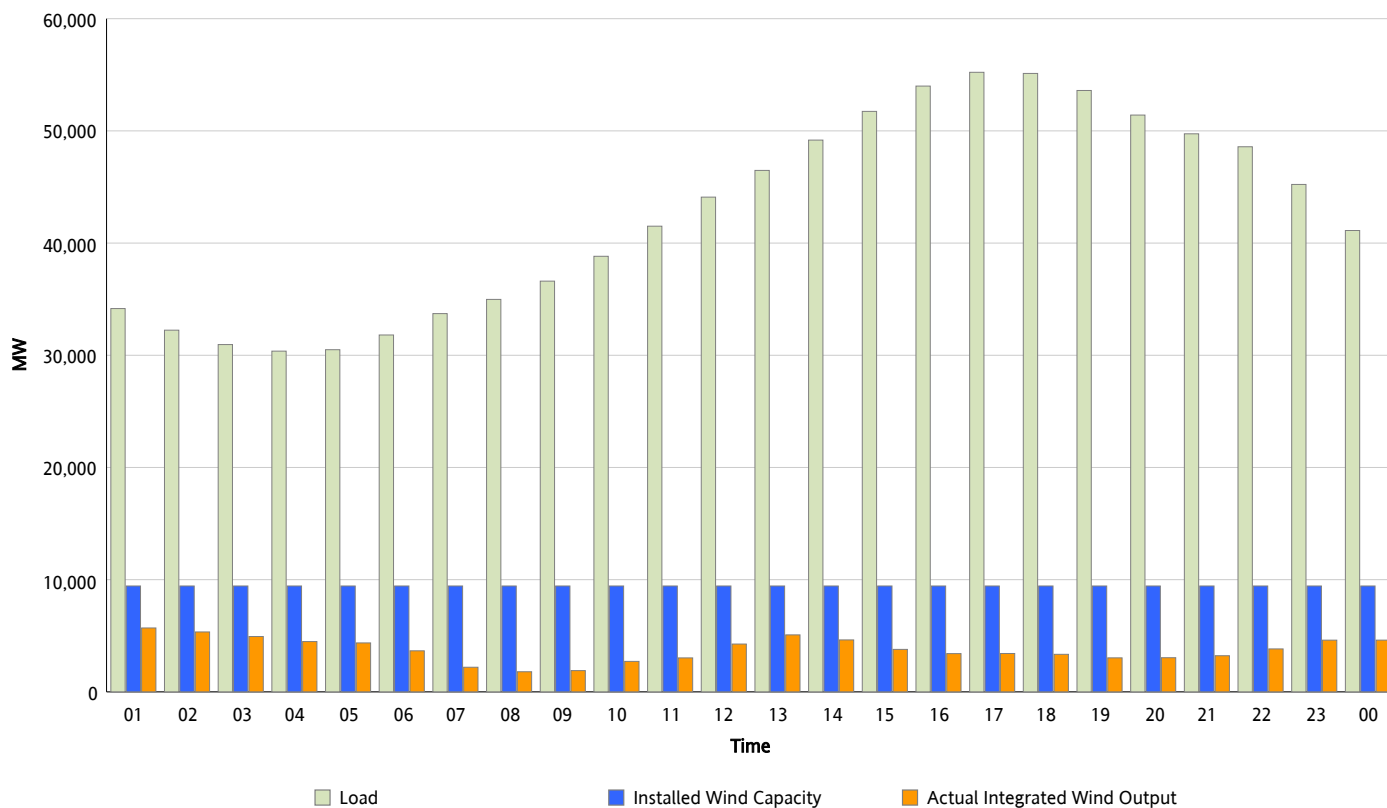


## ERCOT Grid Operations

### Wind Integration Report : 06/13/2012

Peak Load	55,224 MW
Load Peak Hour (HE)	17
Wind Over Peak	3,421 MW
Wind Record 04/13/12	7,925 MW
Max Wind Value*	6,134 MW
Wind Peak Time	00:08
Wind Integration %	17.36 %

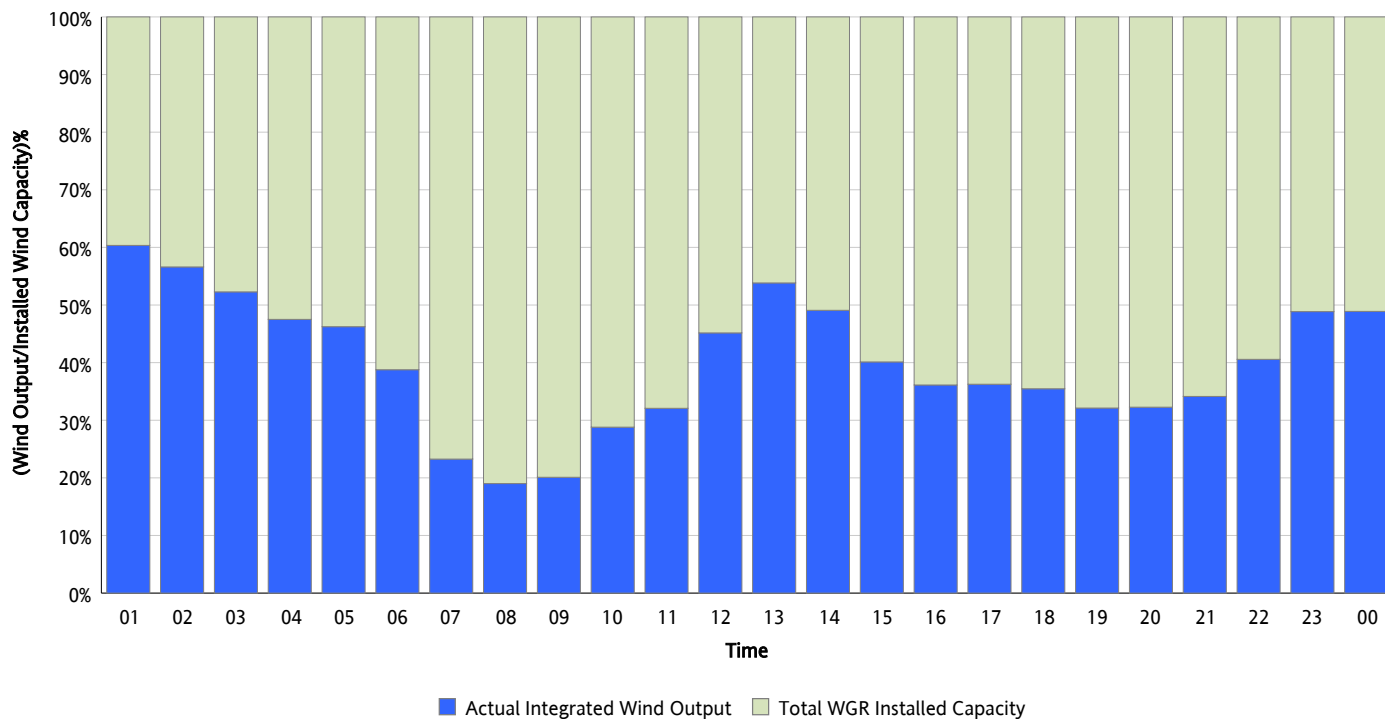
**Hourly Average Actual Load vs. Actual Wind Output**  
**06/13/2012**



\* Wind Record and Wind Max represent instantaneous values and the rest of the values are integrated over the hour

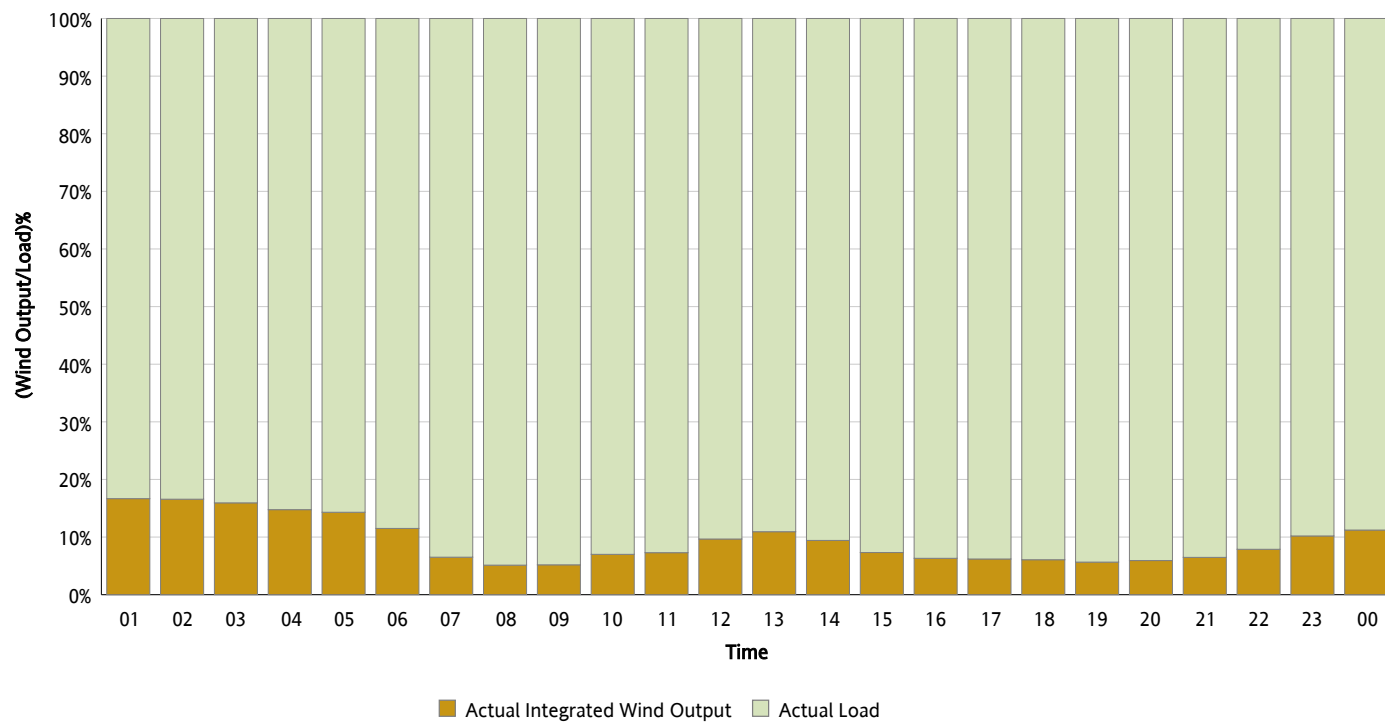
## Actual Wind Output as a Percentage of the Total Installed Wind Capacity

06/13/2012



## Actual Wind Output as a Percentage of the ERCOT Load

06/13/2012



## ERCOT Load vs. Actual Wind Output

06/06/2012 - 06/13/2012

